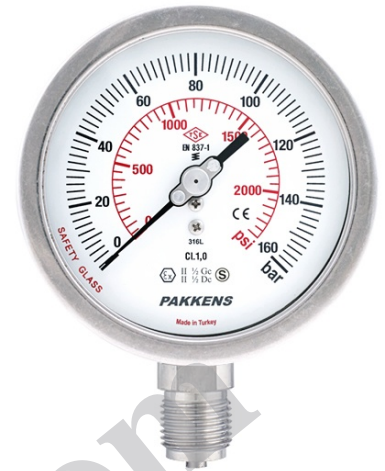


Pressure Gauges / Accurate Pressure Gauges / Solid Front Pressure Gauges / Ø 100 mm.

**CONSTRUCTIVE PROPERTIES**

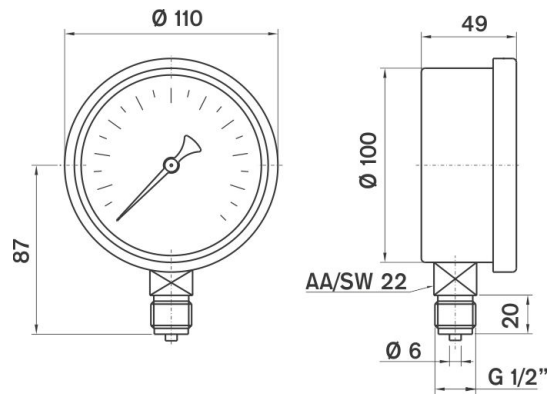
	STANDARD	OPTIONAL
Mounting Type	Bottom Connection	See Technical Drawing
Scale Unit	bar/psi	bar   psi   kg/cm <sup>2</sup>
Scale Range (PN)	0/0,6   0/1   0/1,6   0/2,5   0/4   0/6   0/10   0/16   0/25   0/40   0/60   0/100   0/160   0/250   0 - 315   0/400   0/600   0 - 1000	
Vacuum Scale Range	-1 / 0   -1 / +0,6   -1 / +1,5   -1 / +3   -1 / +5   -1 / +9   -1 / +15   -1 / +24	
Case	Stainless Steel AISI-304	-
Bezel	Stainless Steel AISI-304	-
Window	Safety Glass	Polycarbonate
Movement	Stainless Steel AISI-304	Vib-lock Movement
Wetted Parts	Stainless Steel AISI-316L	-
Connection	G 1/2" B	1/2" NPT
Dial	Aluminum	-
Pointer	Adjustable Aluminum	Stainless Steel AISI-304
Welding	Special Welding	-



**MH100DLS1/SF**  
Bottom Connection

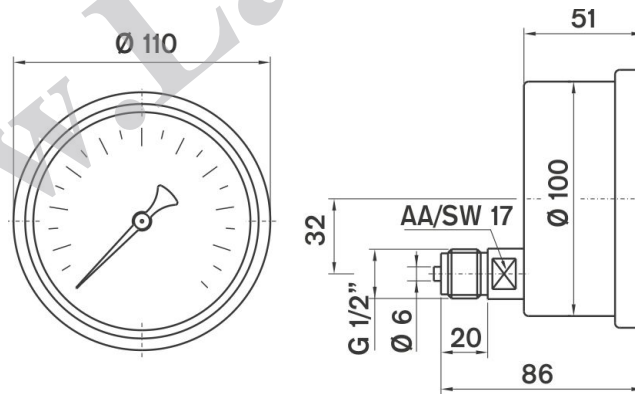
**USAGE PROPERTIES**

Fluid Temperature	Maximum + 200 °C	-
Ambient Temperature	- 20 ... + 60 °C	-
Operating Pressure (max.)	Must not exceed full scale.	
Over Pressure Limit	F.S. x 1,3	-
Accuracy Class	CL 1,0	CL 0.5
Protection Rate	IP 65	IP 68
Optimum Operating Range	Between 0,0 x PN and 1,0 x PN	
Storage Temperature	-40 ... +70 °C	-
Conformity	EN 837 - 1	-
Mechanical Shock Test Load	15g	-
Mechanical Vibration Test	10 Hz ile 150 Hz -1 oktav/dk. 2s / 3 eksende	



Model No: MH100DLS1/SF

Bottom Connection



Model No: MH100DLS4/SF

Lower Back Connection